

# VIVREAU®

ADVANCED WATER SYSTEMS



V3-202



Intertek

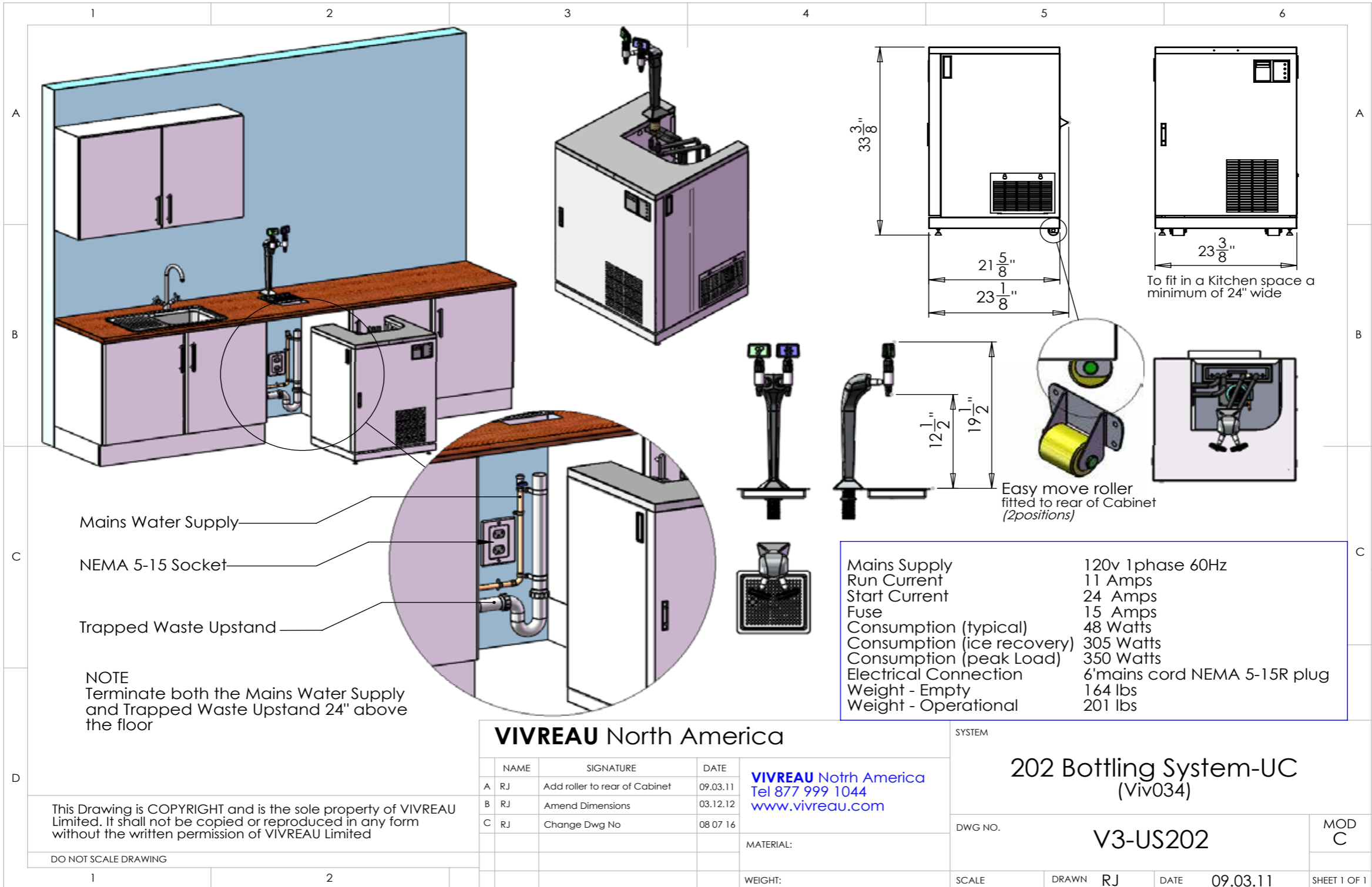


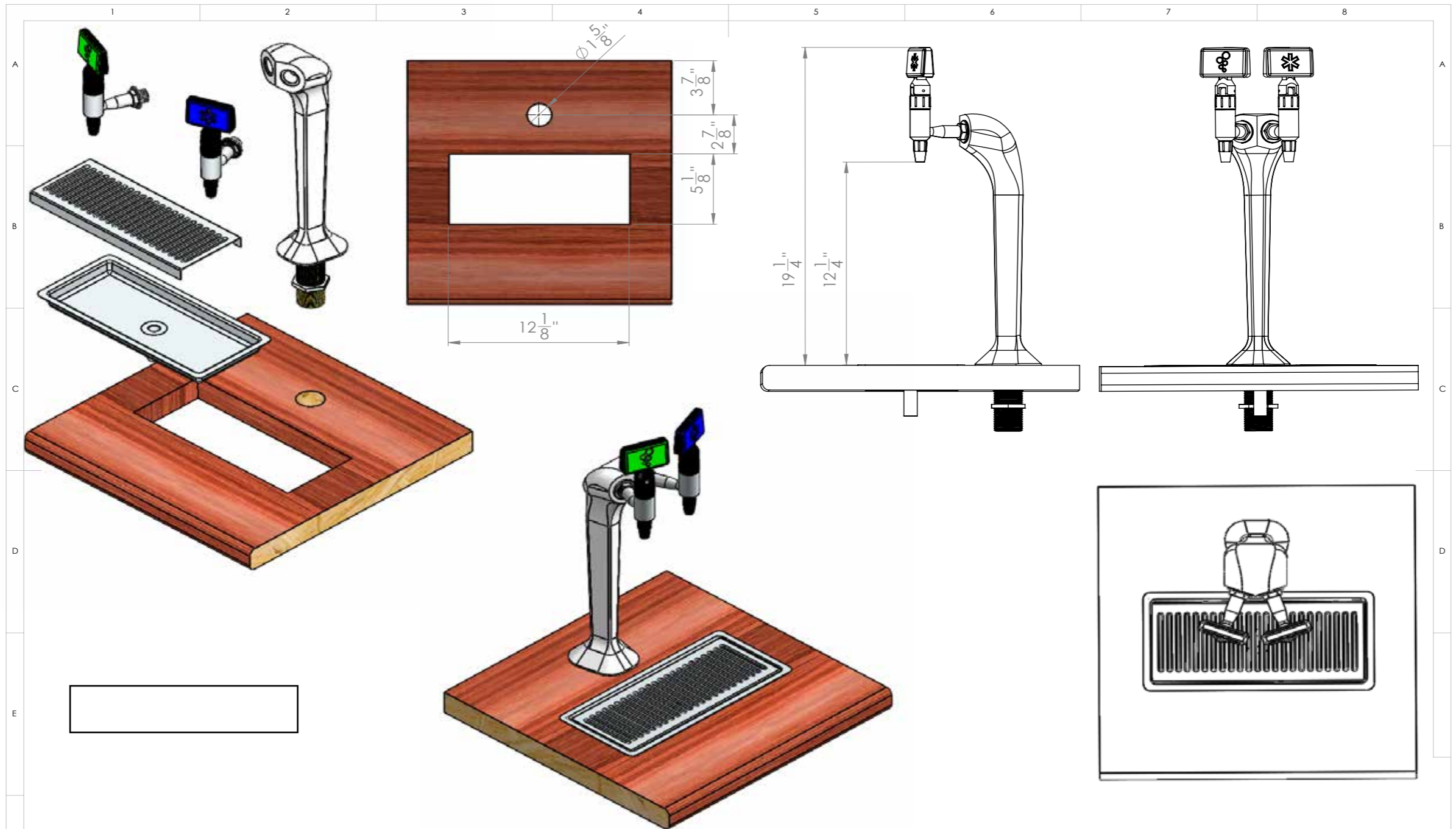
# MAIN BOTTLER

Re-usable glass bottler | V3-202



- \* Dispenses chilled, still and sparkling water
- \* Substantially reduce costs of purchasing pre-bottled mineral waters
- \* Re-usable glass bottles in 425ml, 500ml, 750ml and 1 liter sizes
- \* Bottles can be personalized
- \* Save the environment - eliminate regular deliveries as well as the disposal of empty bottles and packaging
- \* High performance ice bank refrigeration system capable of delivering very high volumes of chilled water at low temperatures, particularly at peak demand times
- \* Eliminate any storage issues
- \* Purpose designed bottle washing trays designed to fit most commercial dishwashers
- \* Removable tap nozzles for ease of cleaning and sanitizing
- \* Stainless steel drip tray with plumb to waste option
- \* Integral CO2 bottle



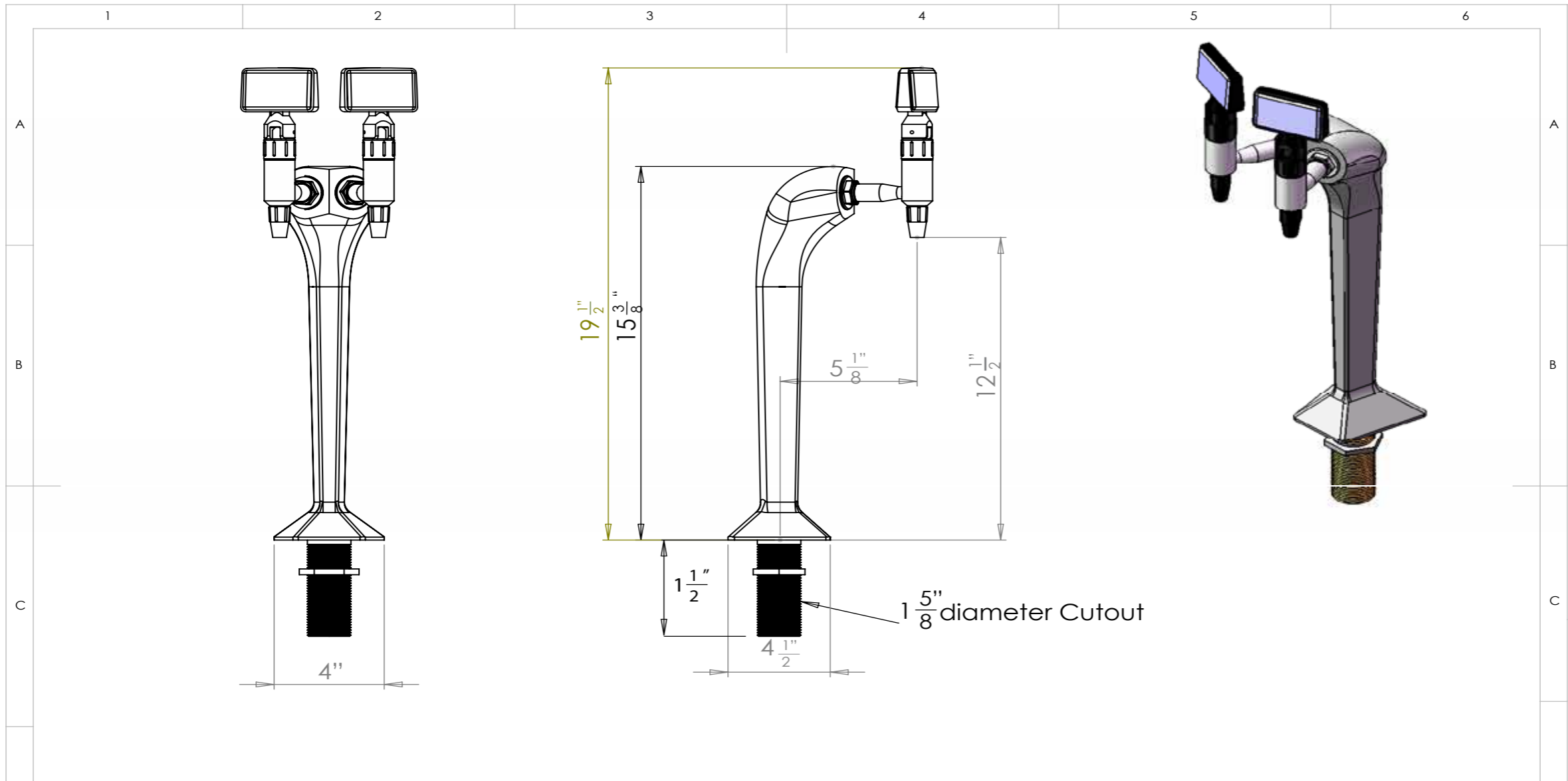


This Drawing is Copyright and is the sole property of VIVREAU LIMITED If shall not be copied or reproduced in any form without the express permission of VIVREAU LIMITED. COPYRIGHT © VIVREAU LIMITED 2011	MATERIAL				VIVREAU North America	TITLE: Double Cobra/Recessed Tray		
	FINISH:				Tel 88 999 1044	DWG NO. DCT- US.04 A Data Base		
	COLOUR				<a href="http://www.vivreauwater.com">www.vivreauwater.com</a>	DRAWN	CHKD	APPVD
	WEIGHT:	A	General Revision	RJ 05.12.13		SCALE: 1:10	ALL DIMENSIONS IN MM	DO NOT SCALE DRAWING





Intertek



This Drawing is COPYRIGHT and is the sole property of VIVREAU Limited. It shall not be copied or reproduced in any form without the written permission of VIVREAU Limited

DO NOT SCALE DRAWING

	NAME	SIGNATURE	DATE	VIVREAU Limited	SYSTEM	Twin Cobra CB2	
CHK'D				Unit 44:Metropolitan Park: Norwich Road:Greenford: Middlesex: UB6 8UB. Tel 0845 674 9655 www.vivreau.com	DWG NO.	Viv 01 025.00 CB2	A4
APPV'D							
				MATERIAL:	SCALE	DRAWN	DATE
				WEIGHT:			
	REVISION						SHEET 1 OF 1



# BOTTLER North America V3-202 Specification Sheet



## Product Dispensed:

Advanced micro-filtered, chilled still and sparkling water

## Application:

For the purpose of filling Vivreau re-usable glass bottles

## Equipment Dimensions:

- \* Width 23 3/8" Inches
- \* Depth 23 1/8" Inches
- \* Height 33 3/8" Inches (to top of cabinet height)

## Cobra Tap:

- \* 19 1/2" (total tap height mounted) \*Maximum Counter thickness for mounting cobra tap 1 1/2"

Please note that the system is installed as an under-counter unit. Alternatively it can be installed as a floor-standing unit.

## Floor-standing: (alternative option)

Refer to Bottler V3-201 specification sheet.

## The following services are required to be supplied by the customer and must be available prior to installation:

- \* 1 potable 1/2" cold water supply terminating in a 1/2" ball valve, 1/2" female pipe thread. (ball valve must be accessible for service and installation). \*The Vivreau system incorporates back flow prevention, any additional back flow devices required by local or state code must also be supplied by the customer prior to installation. There should not be any other filters/pre-filters before the Vivreau system.
- \* Minimum water pressure 50 PSI
- \* Minimum water flow 80 Gallons per hour



Water Supply  
1/2" Threaded Ball Valve





Intertek



- \* 15amp electrical receptacle (5-15 R) 120v/60hz (11 amps)
- \* CO2 - 20# canister (customer supplied) will fit inside unit, larger canisters can be connected externally (CO2 must be available for installation)
- \* \*If connecting to a bulk or existing CO2 system a CO2 line terminating at a ¼” barbed shutoff valve must be available within 40” of the Bottling System installation site, 100psi minimum pressure.



CO2 Supply  
¼” Barbed Shutoff

**OPTIONAL:** If the drip tray is to be plumbed to waste the customer needs to supply a rigid vertical pipe that drains to a properly trapped drain according to local codes. The vertical pipe for the drip tray must be located directly behind where the machine is to be installed and must be at least 1 1/4” ID.

**Location of Services:** (all services must be accessible for installation and service)

- \* Please ensure all services are kept within 40” of bottling system
- \* Water shut-off valve to be located at low level. Please ensure that there is sufficient room for a 6 inch long fitting to be connected to the shut-off valve.
- \* Top of “optional” waste receptacle should be located between 12 and 18 inches from ground level.
- \* The taps must be mounted on the work surface directly above the main system.

**Insulation:**

Please ensure that all water pipes feeding the Vivreau System are correctly insulated to ensure that the water does not heat up within the pipes prior to entering the Vivreau system. This is essential for water quality reasons.

---

**If the system is to be installed in an enclosed space, adequate ventilation must be provided.**

**For Indoor Use Only**



## NORTH AMERICA



VIVREAU USA  
+1 877 999 1044



VIVREAU Canada  
+1 877 999 1044

## EUROPE



VIVREAU UK (head office)  
+44 (0)845 674 9655



VIVREAU Austria  
+49 (0) 9401 607 216



VIVREAU Benelux  
+31(0)881117111



VIVREAU Denmark  
+45 22 52 80 03



VIVREAU Finland  
00358 40 741 5100



VIVREAU France  
+33 632 8293 09



VIVREAU Germany  
+49 (0) 9401 607 216



VIVREAU Ireland  
+44 (0)845 674 9655



VIVREAU Italy  
+39 035 19964474



VIVREAU Netherlands  
+31(0)881117111



VIVREAU Poland  
+48 730 797 373



VIVREAU Romania  
+40 722 542 507



VIVREAU Russia  
+7 903 690 6464



VIVREAU Spain  
+34 619 230 140



VIVREAU Sweden  
0046 70 1092918



VIVREAU Switzerland  
+41 79 415 65 65

## AND BEYOND



VIVREAU Australia  
+(61) 2 9486 4226



VIVREAU New Zealand  
Tel. +64 9 377 8621



VIVREAU South Africa  
+27 82 292 1326

**VIVREAU<sup>®</sup>**  
ADVANCED WATER SYSTEMS