



# V3-201

## Specification Sheet

VIVREAU®



# Main Bottler

## Re-usable glass bottler | V3 - 201

- Dispenses chilled, still and sparkling water
- Substantially reduce costs of purchasing pre-bottled mineral waters
- Re-usable glass bottles in 425ml, 700ml, 750ml and 1 liter sizes
- Bottles can be customized
- Save the environment - eliminate regular deliveries as well as the disposal of empty bottles and packaging
- High performance ice bank refrigeration system capable of delivering very high volumes of chilled water at low temperatures, particularly at peak demand times
- Eliminate any storage issues
- Purpose designed bottle washing trays designed to fit most commercial dishwashers
- Removable tap nozzles for ease of cleaning and sanitizing
- Stainless steel drip tray with plumb to waste option
- Integral CO2 bottle



February 2021





# Please Read First

This Vivreau Water Dispenser is unlike any other water system you may have worked with and requires the following to install.

## Electrical

### Outlets

(1) 20amp electrical circuit GFCI recommended (5-20R) 120v, 60Hz (11 amps)

**CO2** (Customer supplied)

## Plumbing

### Water Connection

1 potable ½” cold water supply terminating in a ½” ball valve with a ½” female pipe thread

### Water Supply

- Minimum water pressure 50 PSI
- Minimum water flow 80 Gallons per hour

**NOTE:** Any incoming water temperature above 60°F will severely compromise the ability for the system to maintain a cold water supply

### Drip Tray Drain (Optional)

A rigid vertical pipe that drains to a properly trapped drain according to local codes - must be at least 1 1/4” ID



Please refer to the rest of this document for further details regarding each specification. Contact Vivreau with any questions: +1 877 999 1044

# Bottler North America V3-201 Specification Sheet

**Product Dispensed:**

Advanced micro-filtered, chilled still and sparkling water

**Application:**

For the purpose of filling Vivreau re-usable glass bottles

**Equipment Dimensions:**

- Width 23 3/8” Inches
- Depth 23 1/8” Inches
- Height 33 3/8” Inches (to top of cabinet height)
- 52 7/8” Inches (to top of dispense tap)

Please note that the system is installed as a floor-standing unit. Alternatively it can be installed as an under-counter system

**The following services are required to be supplied by the customer and must be available prior to installation:**

## CO2

- CO2 - 20# canister (customer supplied) will fit inside unit, larger canisters can be connected externally (CO2 must be available for installation)
- \*If connecting to a bulk or existing CO2 system a CO2 line terminating at a 1/4” barbed shutoff valve must be available within 40” of the Bottling System installation site, 100psi minimum pressure.



## Electrical

- 1, 20amp electrical circuit (5-20 R) 120V 60Hz (11 amps)

## Plumbing

- 1 potable 1/2" cold water supply terminating in a 1/2" ball valve, 1/2" female pipe thread. (ball valve must be accessible for service and installation).  
\*The Vivreau system incorporates back flow prevention, any additional back flow devices required by local or state code must also be supplied by the customer prior to installation. There should not be any other filters/pre-filters before the Vivreau system.

**OPTIONAL:** If the drip tray is to be plumbed to waste the customer needs to supply a rigid vertical pipe that drains to a properly trapped drain according to local codes. The vertical pipe for the drip tray drain must be located directly behind where the machine is to be installed and must be at least 1 1/4" ID.

Female Water Supply  
1/2" Threaded Ball Valve



### Location of Services: *(all services must be accessible for installation and service)*

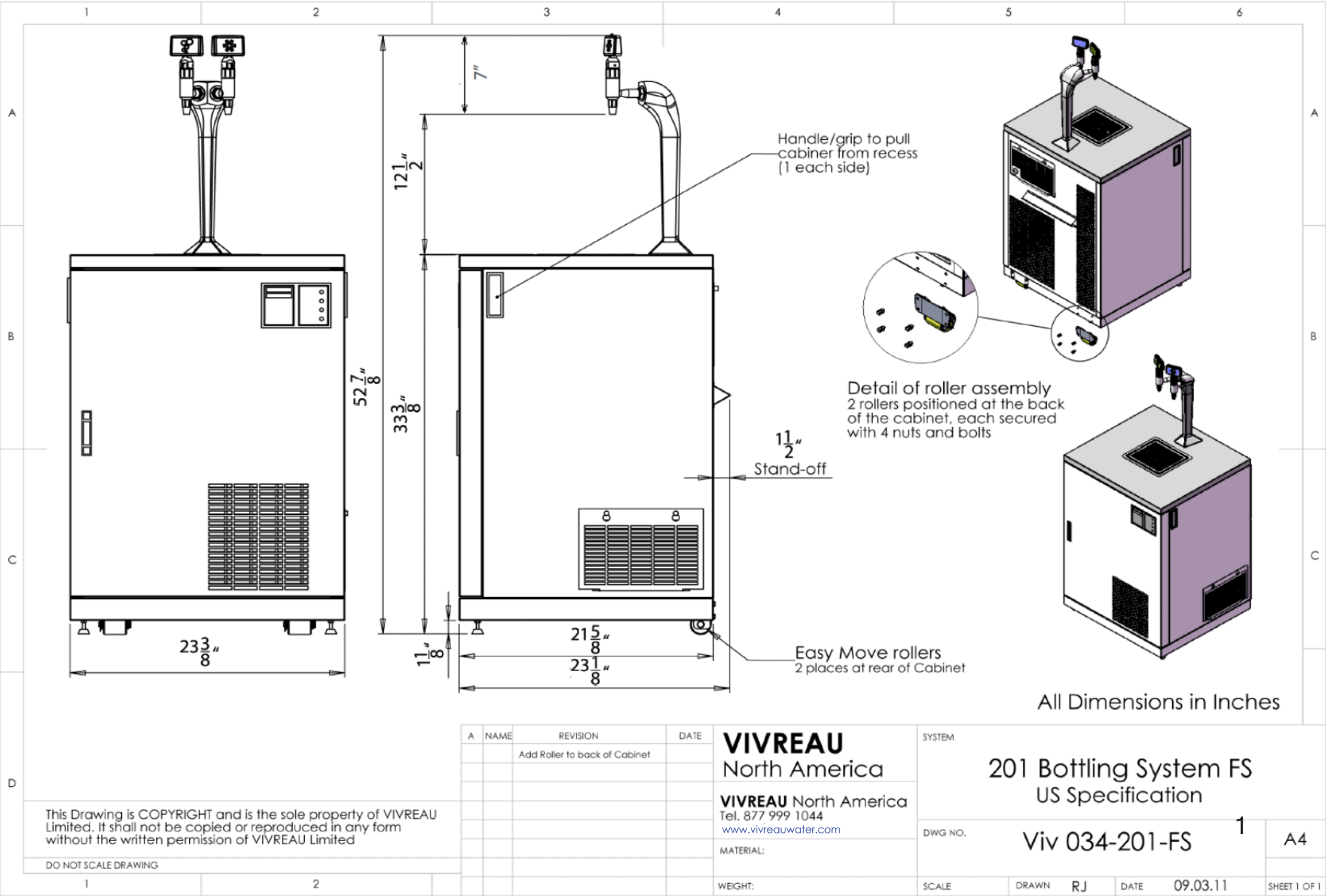
- Please ensure all services are kept within 40" of bottling system. Unless otherwise specified.
- Water shut-off valve to be located at low level. Please ensure that there is sufficient room for a 6 inch long fitting to be connected to the shut-off valve.
- Top of "optional" waste circuit should be located between 12 and 18 inches from ground level.

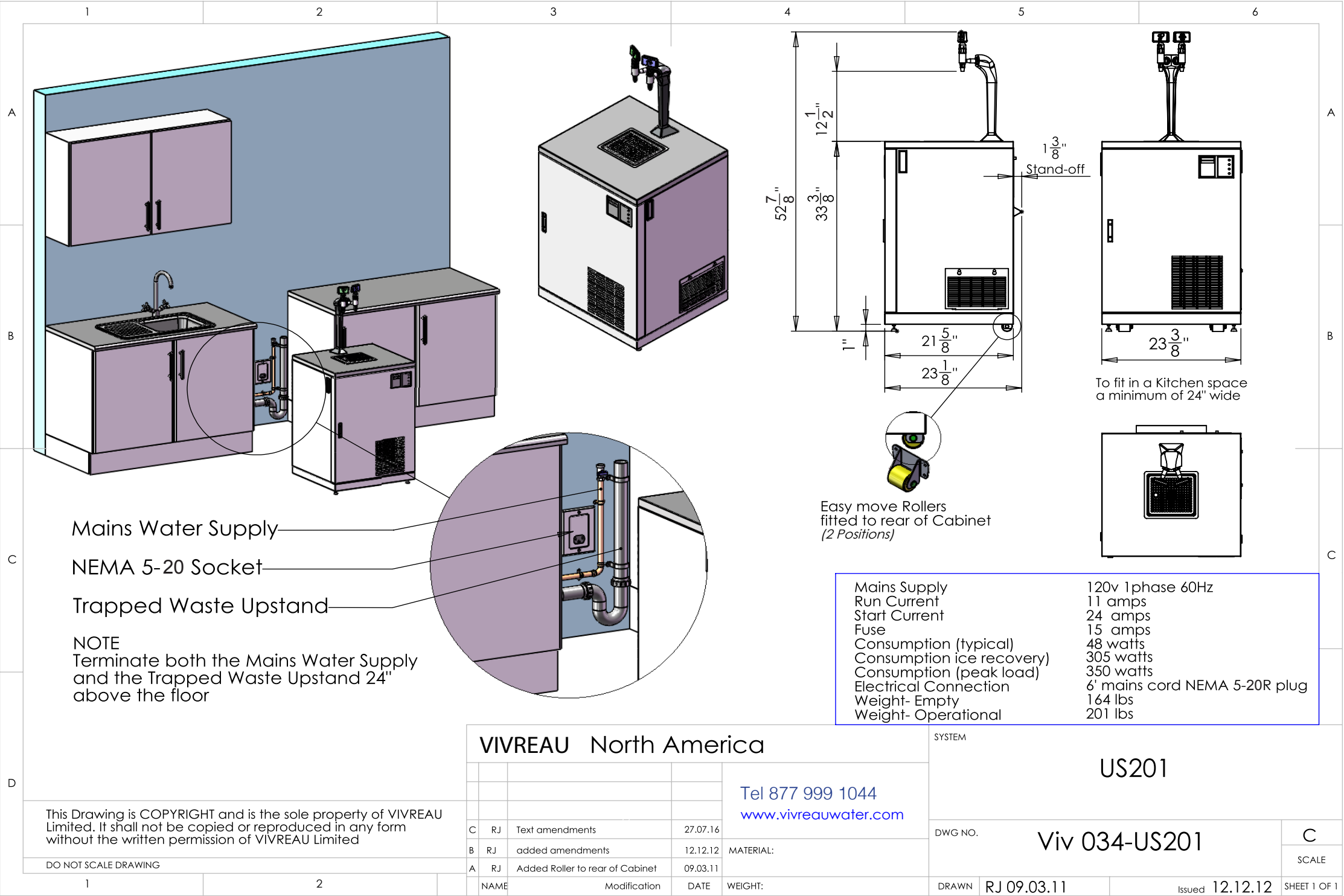
### Insulation:

Please ensure that all water pipes feeding the Vivreau System are correctly insulated to ensure that the water does not heat up within the pipes prior to entering the Vivreau system. This is essential for water quality reasons.

**If the system is to be installed in an enclosed space, adequate ventilation must be provided.**  
**For Indoor Use Only**

Bottling System  
Specefications







# VIVREAU<sup>®</sup>

ADVANCED WATER SYSTEMS

## Contact Info

**Phone Number:**

+1 877 999 1044

**Email:**

InfoUSA@vivreau.com

InfoCanada@vivreau.com

Or visit [vivreauwater.com](http://vivreauwater.com)